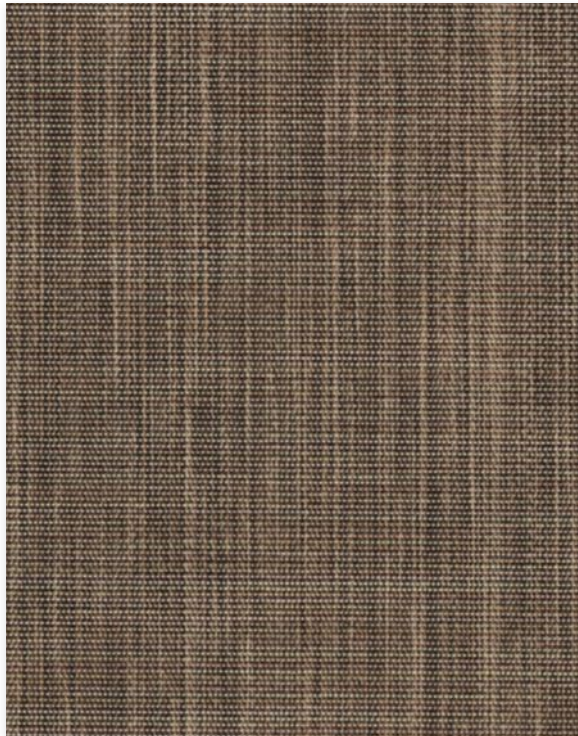


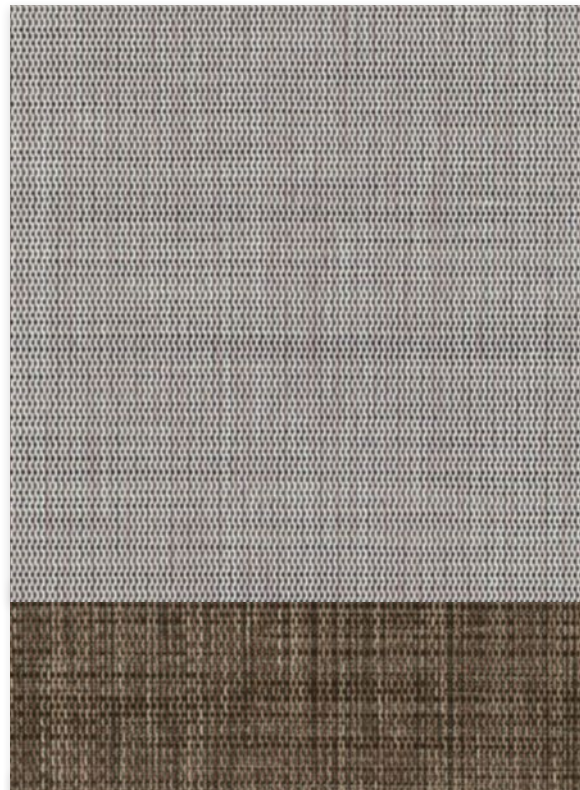
# Deco Screen

Decorative | 3% 5% openness



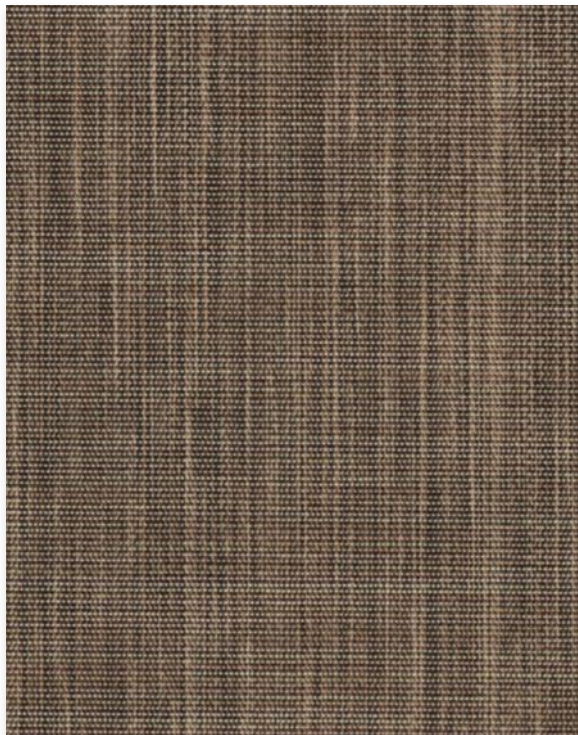
3%

00D249 | Flagstone



00D137  
River Rock

00D237  
Hazelnut



5%

00D249 | Flagstone



00D012  
Parchment

00D212  
Tumbleweed

00D112  
Naturelle

00D226  
Harvest

## Specifications

Item Number

Product Category

Fabric Style

Openness Factor

Composition

UV Blockage

Standard Packaging

Width

Weight

Thickness

**3%** 008553 | **5%** 008555

Decorative

Rib Weave

3% & 5%

36% Fiberglass | 64% Vinyl

Approximately 95% - 97%

Rolls of 30 ly (27 lm)

98" (250 cm)

**3%** 12.21 oz/yd<sup>2</sup> (414 g/m<sup>2</sup>) ±5% | **5%** 11.3 oz/yd<sup>2</sup> (385 g/m<sup>2</sup>) ±5%

**3%** .023 in (0.58 mm) ±5% | **5%** .020 in (0.52 mm) ±5%

## Classifications

Fire Classifications

Bacterial & Fungal Resistance

Environment

Acoustical Performance

NFPA 701-10 TM#1, California U.S. Title 19,  
CAN/ULC-S109-03 Small & Large Flame Test

ASTM E2180, ASTM G21

RoHS - Lead Free, GREENGUARD Gold

**3%** NRC: 0.35, SAA: 0.33 | **5%** NRC: 0.10, SAA: 0.12

## Fabrication

**Cutting:** Cold, Ultrasonic or Crush | **Welding:** Radio Frequency, High Frequency, Impulse, Hot Air or Wedge

We recommend testing all cutting and welding methods prior to use to confirm they meet your individual fabric specifications.

## Deco Screen

ITEM	COLOR
00D249	Flagstone
<b>00D137</b>	<b>River Rock</b>
00D237	Hazelnut
<b>00D012</b>	<b>Parchment</b>
00D212	Tumbleweed
<b>00D112</b>	<b>Naturelle</b>
00D226	Harvest

### FABRIC

thermal						optical			
Rs		As		Ts		Rv		Tv	
3	5	3	5	3	5	3	5	3	5
23	20	71	72	6	8	23	20	5	7
<b>33</b>	<b>33</b>	<b>60</b>	<b>57</b>	<b>7</b>	<b>10</b>	<b>35</b>	<b>35</b>	<b>6</b>	<b>9</b>
13	14	83	79	4	7	12	13	4	7
<b>64</b>	<b>63</b>	<b>20</b>	<b>21</b>	<b>16</b>	<b>16</b>	<b>67</b>	<b>66</b>	<b>12</b>	<b>12</b>
30	29	62	61	8	10	30	29	6	8
<b>54</b>	<b>52</b>	<b>33</b>	<b>33</b>	<b>13</b>	<b>15</b>	<b>57</b>	<b>54</b>	<b>9</b>	<b>11</b>
15	16	79	76	6	8	14	15	5	6

### FABRIC + GLASS

commercial		residential	
SHGC Improvement		SHGC	
3	5	3	5
24%	21%	0.54	0.57
<b>29%</b>	<b>29%</b>	<b>0.49</b>	<b>0.50</b>
16%	16%	0.59	0.60
<b>50%</b>	<b>47%</b>	<b>0.33</b>	<b>0.34</b>
26%	24%	0.51	0.53
<b>42%</b>	<b>39%</b>	<b>0.38</b>	<b>0.40</b>
18%	18%	0.58	0.59

## Warranty

## Care & Cleaning

5 Year Exterior & 10 Year Interior

Remove dust with a vacuum cleaner or compressed air. Do not scrub. Do not use solvents or any abrasive substance which might damage the coating of the fabric. Clean with a sponge or soft brush dipped in soapy water using a mild detergent. Rinse with clean water. Leave the blind down until completely dry. You can also very gently rub the fabric with a clean white pencil eraser to remove small stains.

The fabric performance tests were conducted in accordance with ASTM E891 & ASTM E903-96: Solar Transmittance (Ts), Solar Reflectance (Rs), Solar Absorptance (As), Visible Reflectance (Rv), and Visible Transmission (Tv). Glass performance tests for Solar Heat Gain Coefficient (SHGC) were conducted using the Lawrence Berkeley National Laboratory Window 7.3 NFRC certified software. SHGC % improvement for commercial applications is based on a standard commercial glass makeup of Double Glazing 6 mm | 1/2" air | 6 mm with low E on surface #2. SHGC for residential applications is based on a default residential glass makeup of 3mm clear glass | 1/2" air | 3mm clear glass. Results for SHGC were obtained using the center of glass. Acoustical performance was tested in accordance with ASTM C423-09a: NRC is Noise Reduction Coefficient, SAA is Sound Absorption Average. For up-to-date test results, performance specifications and larger samples, contact the Mermet Technical Department at [www.mermetusa.com](http://www.mermetusa.com).

Mermet Corporation

5970 N. Main Street ■ Cowpens, SC 29330

Ph 1.866.902.9647 ■ [info@mermetusa.com](mailto:info@mermetusa.com)

[mermetusa.com](http://mermetusa.com)